



# HID Dataflex Passport Datapage

Citizen Identity Solutions







# Datapage Security Features

Governments around the world are implementing passport solutions that help better protect their borders while facilitating convenience and respecting the privacy of travellers. Advanced, multi-technology solutions are increasingly the norm to achieve an important balance between security, functionality and return on investment.

The most advanced datapage solutions address the unique risk/threat profiles and requirements of each individual nation. HID Global's government ID solutions customizes each datapage to meet those needs. HID Global continuously strives to add new security features to datapages in order to improve the level of security in government documents. These latest security features bring new levels of confidence and trust to your identity program.

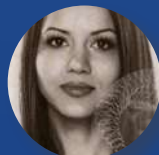
---

To meet any customer requirement, HID Dataflex™ datapages are available in two thicknesses — with or without RFID functionality:

- **HID Dataflex 800**
- **HID Dataflex 600**

## HID DATAFLEX BENEFITS

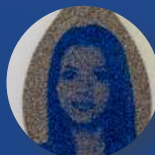
- **Durable.** Document resiliency up to 10 years with patented Crack Prevention Feature (CPF).
- **Reliable.** Secure contactless technology with proven antenna design for optimum chip performance.
- **Secure.** Hinge material specially formulated to prevent separation.
- **Flexible.** Easily integrated into all Passport systems.
- **Convenient.** Single solution provider meets the full range of secure custom ID needs.
- **Customer-centric.** Market-leading design service creates artwork to reflect customers' needs.



LASER  
ENGRAVING



EMBOSSING



HID MIRAGE



DOVID



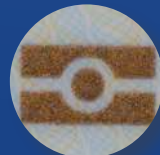
HID SAFELINK



CLEAR  
WINDOWS



MLI/CLI



OVI

In addition to the highlighted features, HID Dataflex datapages are printed to the highest standards with rainbow printing, multicolor guilloches with anti-copy features, IR and UV images, microtext and other background techniques to suit the datapage design.

# Datapage Technology

HID Dataflex datapages combine the most advanced materials technologies with optional features to suit any design or security requirement.

## **HID HINGE MATERIAL:**

- Easily integrated into the datapage structure
- Highly flexible yet durable, so that if tampered with, the hinge will show any structural changes
- Possesses same melting temperature as polycarbonate to prevent separation

## **HID CRACK PREVENTION FEATURE (CPF):**

When integrating a contactless chip into the datapage, HID provides patented technology to ensure the highest level of security and durability.

- Protects against polycarbonate cracking
- Extends the lifespan and overall durability of the polycarbonate datapage
- Increases the ROI of the program by maximizing the durability, reliability and lifecycle of the datapage

## **HID SAFELINK**

- Is a printed feature based on the HID hinge material
- Delivers protection against forgery by datapage substitution
- Augments the security of window features
- Optional features for HID Dataflex datapages



## **HID SOMA:**

- Is a common criteria certified chip operating system
- Guarantees the highest level of security and interoperability for ePassport programs
- Available with the widest range of contactless chip platforms





## COLOR PERSONALIZATION

- The structure of the datapage is designed to optimize the quality of laser engraving
- The color portrait enhances the definition of skin tones by using a combination of inkjet and laser technologies to deliver better clarity to the authenticating party

## HID MIRAGE

- Is a Level 1 window-based feature delivering five distinct layers of security
- Can be easily and quickly authenticated
- Uses negative laser personalization to give strong protection against alteration



MIRAGE VIEWED IN DAYLIGHT



MIRAGE AGAINST LIGHT SOURCE



MIRAGE VIEWED FROM REAR

## MULTIPLE COMPLEX CLEAR WINDOWS

- With customizable shapes and positions
- Complement other security features and suit the design and character of the booklet
- Possesses complexity to deliver different aesthetic features to the different sides of the datapage





# A Powerful Combination

Together these secure innovations have positioned HID Global as a leader in the datapage market. HID Global is the only company to bring all of these innovations together to create a complete datapage solution in-house. To learn more, please contact a local HID Global sales executive.

---

## OUR REFERENCES

HID Global's award-winning ePassports featuring polycarbonate datapages have been protecting borders and travellers for for many years.

The passport booklets of Ireland, Tanzania, Nigeria, Indonesia and Colombia are all secured by HID Dataflex datapages.



hidglobal.com

North America: +1 512 776 9000

Toll Free: 1 800 237 7769

Europe, Middle East, Africa: +44 1440 714 850

Asia Pacific: +852 3160 9800

Latin America: +52 (55) 9171-1108

**For more global phone numbers click here**

© 2022 HID Global Corporation/ASSA ABLOY AB.  
All rights reserved.

2022-09-06-cid-hid-dataflex-br-en  
PLT-06615

Part of ASSA ABLOY